

1. Double click **Imaging Professional**



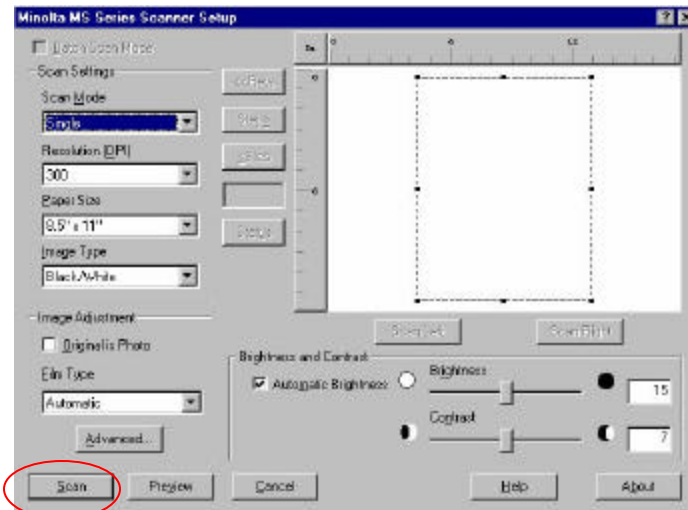
2. Click **Scan New** button



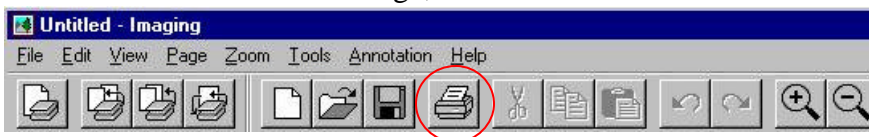
3. You can

- Scan to print (see **Section 4**)
- Scan to e-mail (see **Section 5**)
- Scan to diskette (see **Section 6**)

4.1 Click the **Scan** Button



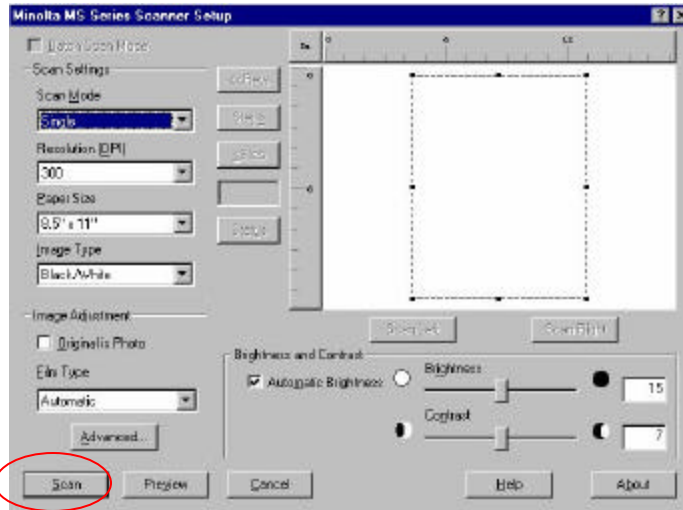
4.2 To Print the scanned image, click the **Print** Button



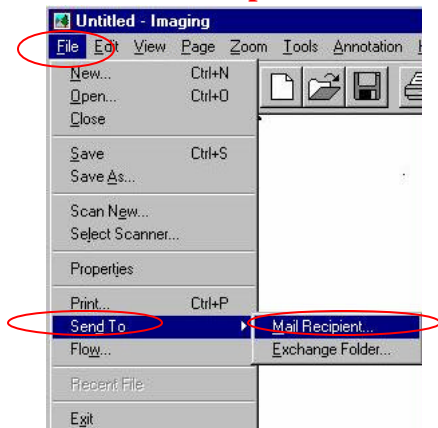
4.3 Finish your work, Close the program by click the **X (exit)** button



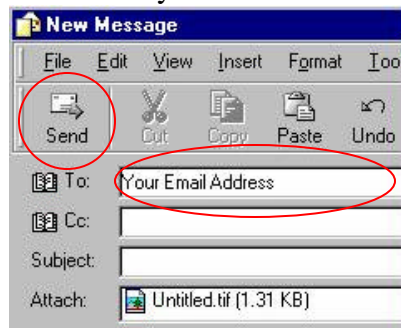
5.1 Click the **Scan** Button



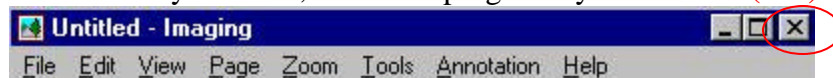
5.2 To Email the scanned image to your own email account, click **File, Send To, Mail Recipient**



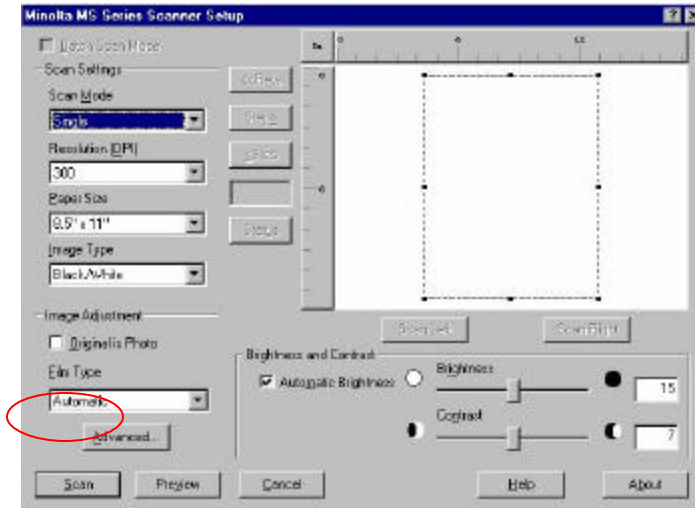
5.3 Enter your **email address**, then click **Send** button



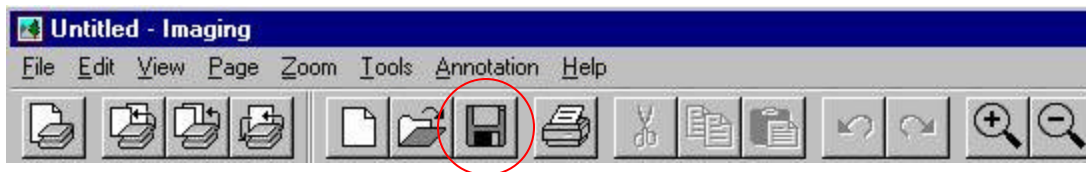
5.4 Finish your work, Close the program by click the **X (exit)** button



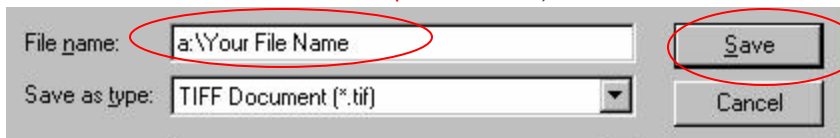
6.1 Click the **Scan** Button



6.2 To **save** the scanned image to a disk, insert a **formatted disk** to floppy drive, then click **Disk** button



6.3 Enter the file name as **a:\File Name**, then **Save** button



6.4 Finish your work, Close the program by click the **X (exit)** button

